

207 27 OCT 1999

Isobars, Fronts, Radar & Data

Fronts at 10 Zulu



# DIY IFR Weather Briefing

Gary White

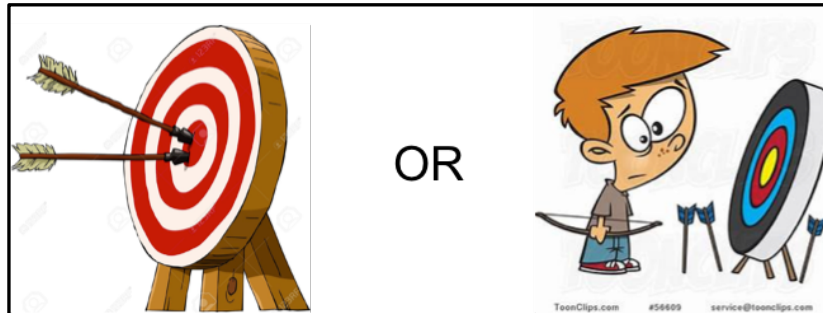
Adapted from Sarah Fritts's *Instrument Pilot's Survival Guide*

Echo Intensities: 1 2 3 4 5 6

Blue - Isobars (4 mb)

# Objective (s)

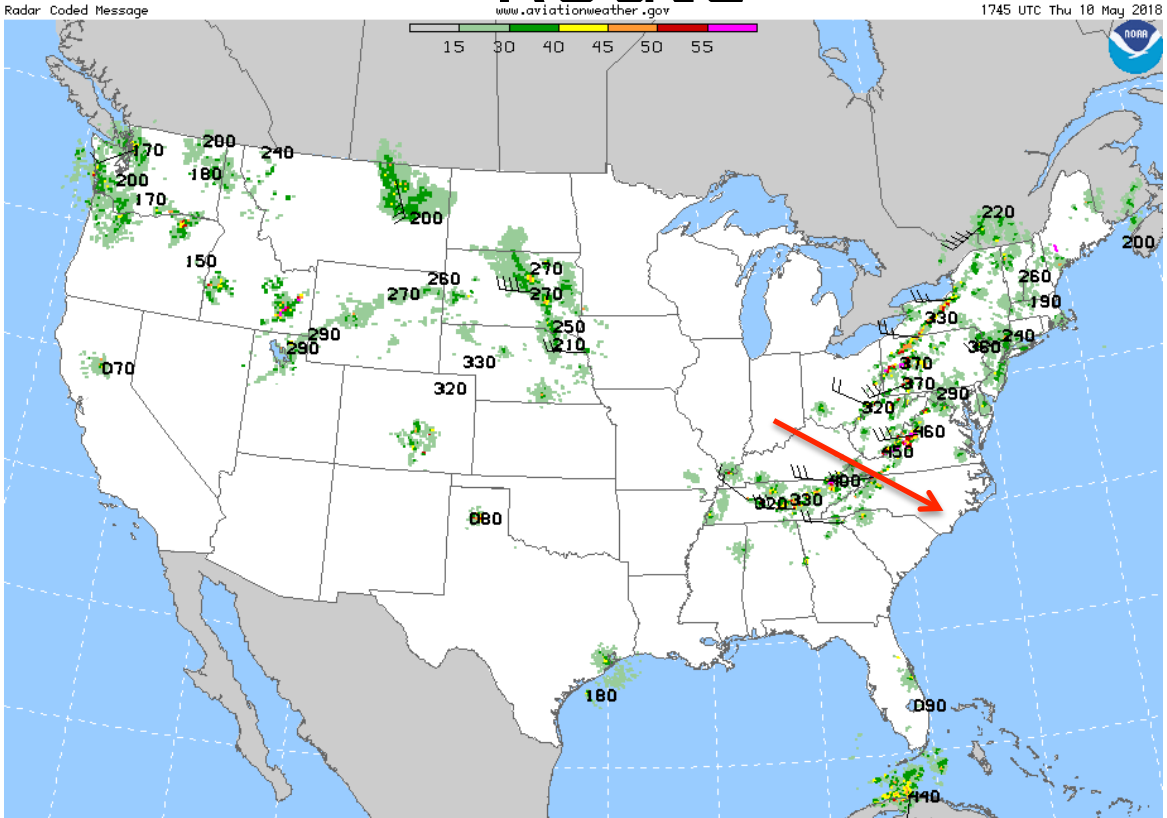
- Have a 'Practical' Approach
- Follow the KISS Method
- Something to Weigh Against a Set of Personal GO vs. NO-GO WX Criteria



# Build a Habit and a Flow

- Follow a Checklist
  - These Charts are a Good Start
  - Modify or Add as You Gain More Experience
- Disclaimer or Emphasis Area
  - Augment With a 800 WX-BRIEF from FSS
  - Proves You Got a Briefing
  - Good Cross-Check
  - Usually 'In-Tune' With Area WX Characteristics

# 1. Begin with Radar Picture Along Route



# Step 1. (cont.)

- Why Not Start With METARS and TAFs?
- Loop Radar and Look for Movement and Trends
- Good Initial Big Picture
- Gary Suggests:
  - Augment with a Synoptic Analysis
  - Highs, Lows, Fronts, etc.

## 2. Departure and Destination TAFs

- Look at Local TAFs at Time of Departure and Destination at ETA
- Examine Trends
  - Evaluate Need for Alternate
  - Adjust Departure Time?
- Gary Suggests:
  - Augment With GFA Forecast Tool
    - CIG, Tops and Visibility
  - Examine Upper Air Forecast

# 3. Bring in METARS

- Look at Wind Strengths and Directions
  - Hint: GFA OBS Tool For Trends
  - Be Careful You Don't Interpret a Diurnal Change as a Trend
- CIGs
  - Agreement with TAFs?
- Develop General Idea of Arrival, Approaches, and Runways

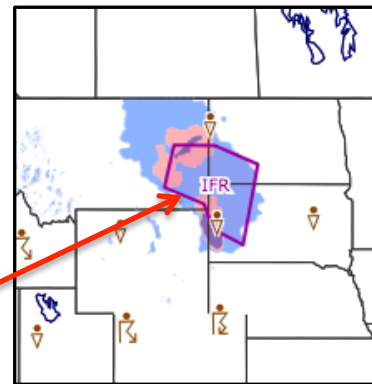
## 4. AIRMETS and SIGMETS

- *Sarah's Rule* – Don't Fly or Takeoff Into SIGMETS – Discussion – Is This Always Valid?
- AIRMETS
  - Proceed with Caution in all Cases
  - Treat Convective, Tango and Zulu AIRMETS with Extra Care



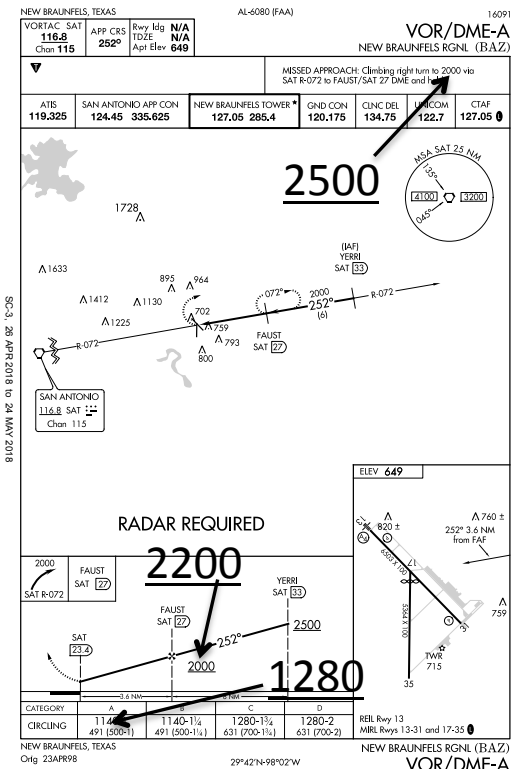
# 5. Bring in Other Imagery

- Satellite
  - Cloud Intensity, Movement (Visual)
  - Vapor and IR Gives Clues About Stability and Intensity
  - Correlate With Radar Depiction
- GFA
  - Precipitation Forecasts
  - Visibility Forecasts
  - CIG/VIS With SIG/AIRMET Overlays
  - Excellent Way to Get an Integrated Picture



# 6. NOTAMS

- Pay Special Attention to:
  - Enroute and Approaches
  - TFRs
  - NAVAIDS
  - Lighting
- Add Notes to Plates and Taxi Diagrams, e.g. Recent KBAZ NOTAMS



# 7. Initial WX Crew Brief

- Include Co Pilot, Flight Instructor
- Augment with Standard WX Brief from FSS
- Note Local WX Patterns, if Known
  - Can Always Call FBOs When Flying Into New Area
- Document and Print Important WX Data

# Summary

- Due to Time We Glossed over NOTAMS
- Remember – WX and NOTAMS Are Equally Important



- Sarah Has a Good NOTAM Guide (free!)
- GO NO-GO ?

# Resources

- Sarah's Web and Blog
  - <http://thinkaviation.net/>
  - <http://thinkaviation.net/blog/>
- [Sarah's NOTAM Decoding Guide](#)

OK, I may look the part, but again, what does WEF on that NOTAM Mean?



# Next – ‘IFR Route Planning’

- This Will Continue The IFR Flight Planning Process from Sarah’s Book
- Perhaps in the June IMC Meeting
- Sarah Fritts: Combat Kiowa Pilot

